

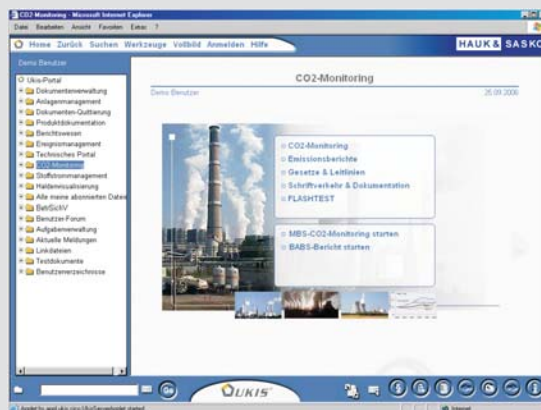


MBS® *CO₂-Monitoring and Emissions Management*

As an established software house providing solutions for the energy industry, HAUK & SASKO can offer a solution for monitoring and reporting carbon dioxide emissions as required by the rules for the European emissions trading scheme. The MBS CO₂ monitoring and reporting solution fully complies to the EU guidelines for the monitoring and reporting of greenhouse gas emissions.

Why use MBS for CO₂ Monitoring and Emissions Management?

- ☑ Easy compliance
- ☑ Precise monitoring of emissions that can strengthen your monitoring concept
- ☑ More transparency by quick comparison of actual with planning data
- ☑ You can predict short and long positions early on
- ☑ Easy integration with portal solutions or trading platforms
- ☑ Our solution provides emissions reporting data for a number of customers including



Typical start screen of a MBS CO₂ Monitoring system

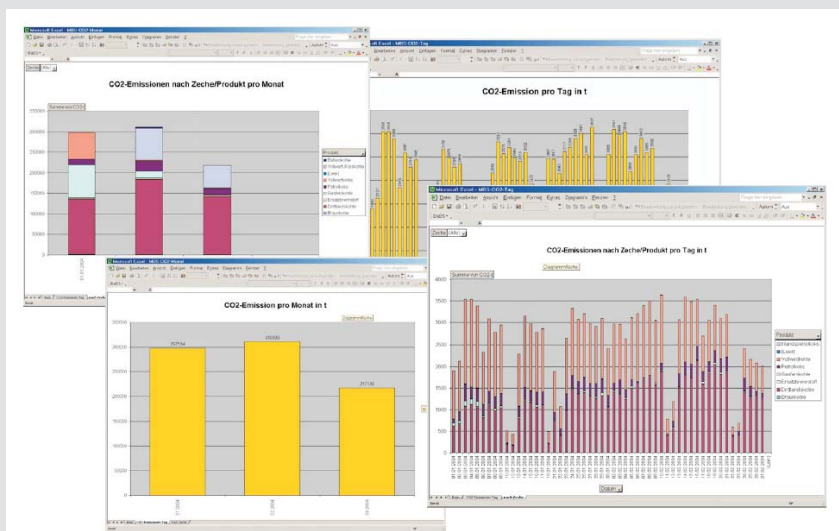
In MBS, all data on material flows are captured as movement data. MBS offers the algorithms needed for the calculation of mass balance sheets from movement data, i.e. from deliveries and consumption of fuels and other relevant substances. These mass balance sheets are the basis for CO₂-monitoring and emissions management.

The MBS CO₂-monitoring Module is based on the general data on fuels and their consumption that is already available in the system. With this data, it is possible to generate reports for any given time period.

Emissions can be calculated based on net calorific value or based on the carbon content of the fuel batch. Besides determining emissions through calculations, the MBS CO₂-monitoring Module is able to determine emissions based on measurements. For facilities which are not covered in MBS, it is possible to import data either via interfaces or by entering data manually into screen forms.

MBS covers fuel supply data, scheduling and delivery data, consumption data at individual power plants, as well as the long-term planning of fuel delivery. On the basis of load dispatches, the CO₂-Monitoring Module can forecast the short- and long-term CO₂-emissions for specific periods of time.

There are a number of optional functionalities for the MBS module CO₂ Monitoring and Emissions Management. There are interfaces to trading platforms which allow you to exchange information on actual and planning data. The module can also be integrated in web-based portals such as UKIS which provide automated reports on emissions. The portal provides data on emissions via a web-based platform. In addition to this the user can view past reports and access information on laws, regulation and best practice of carbon trading.



CO₂ emissions can be analysed by month, week, day or by fuel